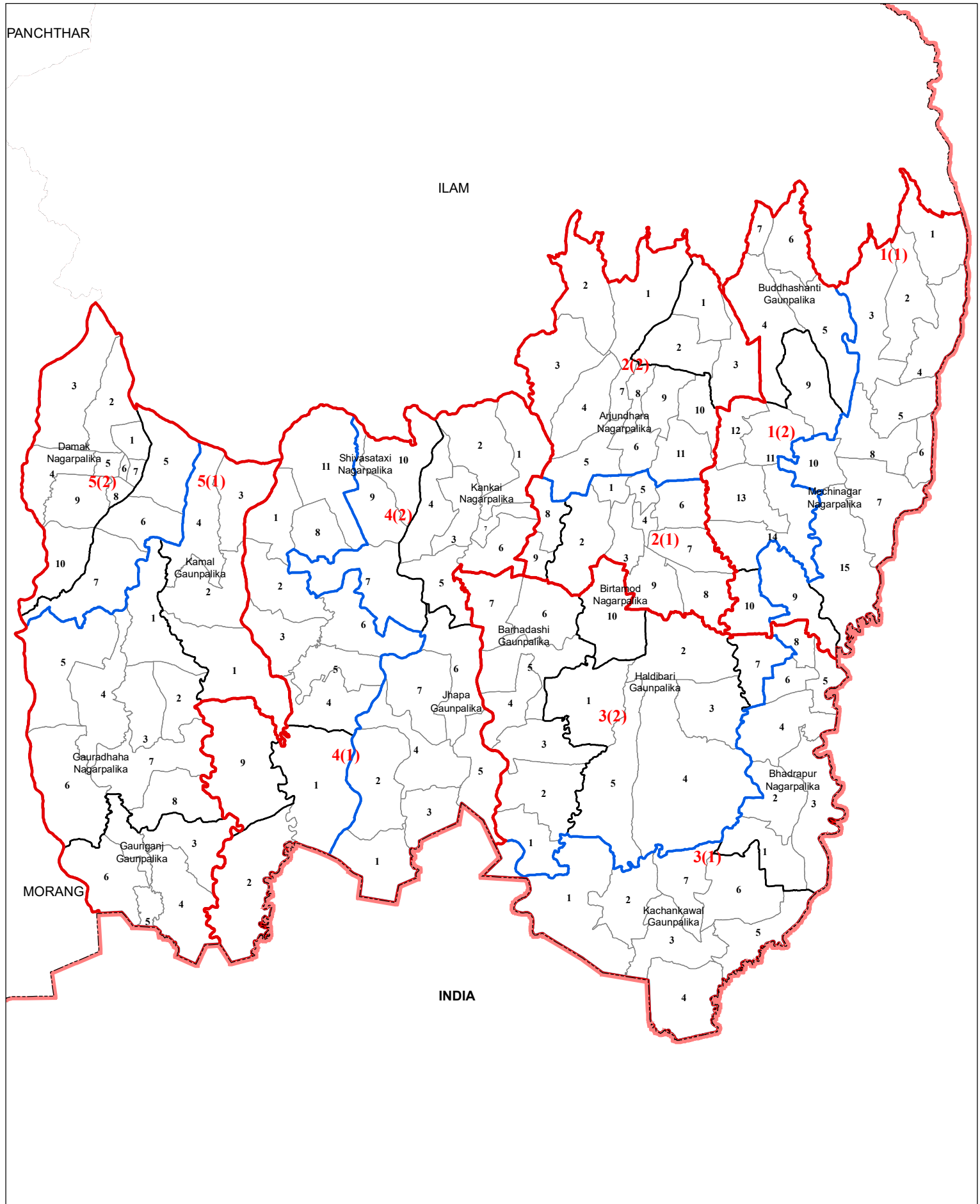


JHAPA

No. of House of Representative Constituency: 5

No. of Provincial Constituency : 10



Legend

- International Boundary
- Province Boundary
- District Boundary
- House of Representative Boundary
- Provincial Constituency Boundary
- Palika Boundary
- Ward Boundary
- Sanskritik Area
- National Park/Wildlife Reserve/Hunting Area/Watershed Area

0 2.5 5 10 15 20 Km

Spatial Data Source : Survey Department
 Population Data Source : Population Census 2011, CBS
 Government of Nepal

Note:
1 in **1(1)** indicates House of Representative Constituency Number and **(1)** indicates Province Constituency Number within the House of Representative Constituency Number and likewise.

