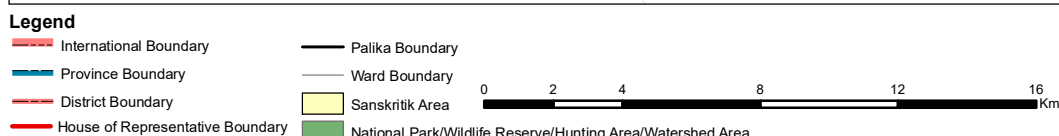
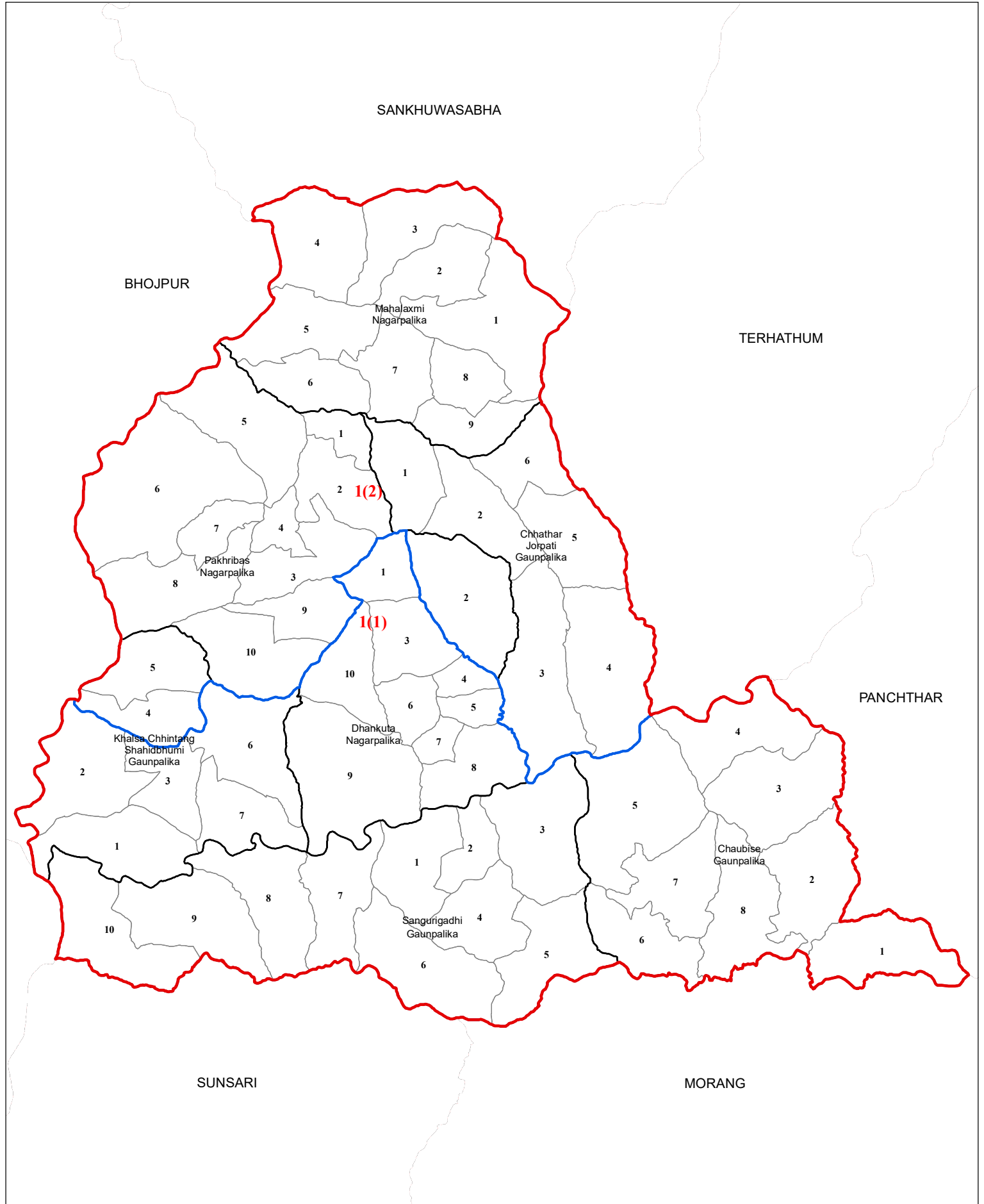
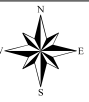


DHANKUTA

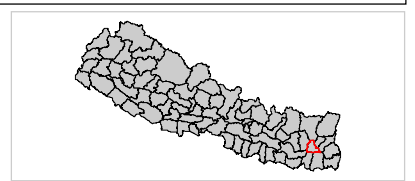
No. of House of Representative Constituency: 1

No. of Provincial Constituency : 2



Spatial Data Source : Survey Department
 Population Data Source : Population Census 2011, CBS
 Government of Nepal

Note:
1 in **1(1)** indicates House of Representative Constituency Number and **(1)** indicates Province Constituency Number within the House of Representative Constituency Number and likewise.



Prepared By : Electoral Constituency Delineation Commission (ECDC), 2074