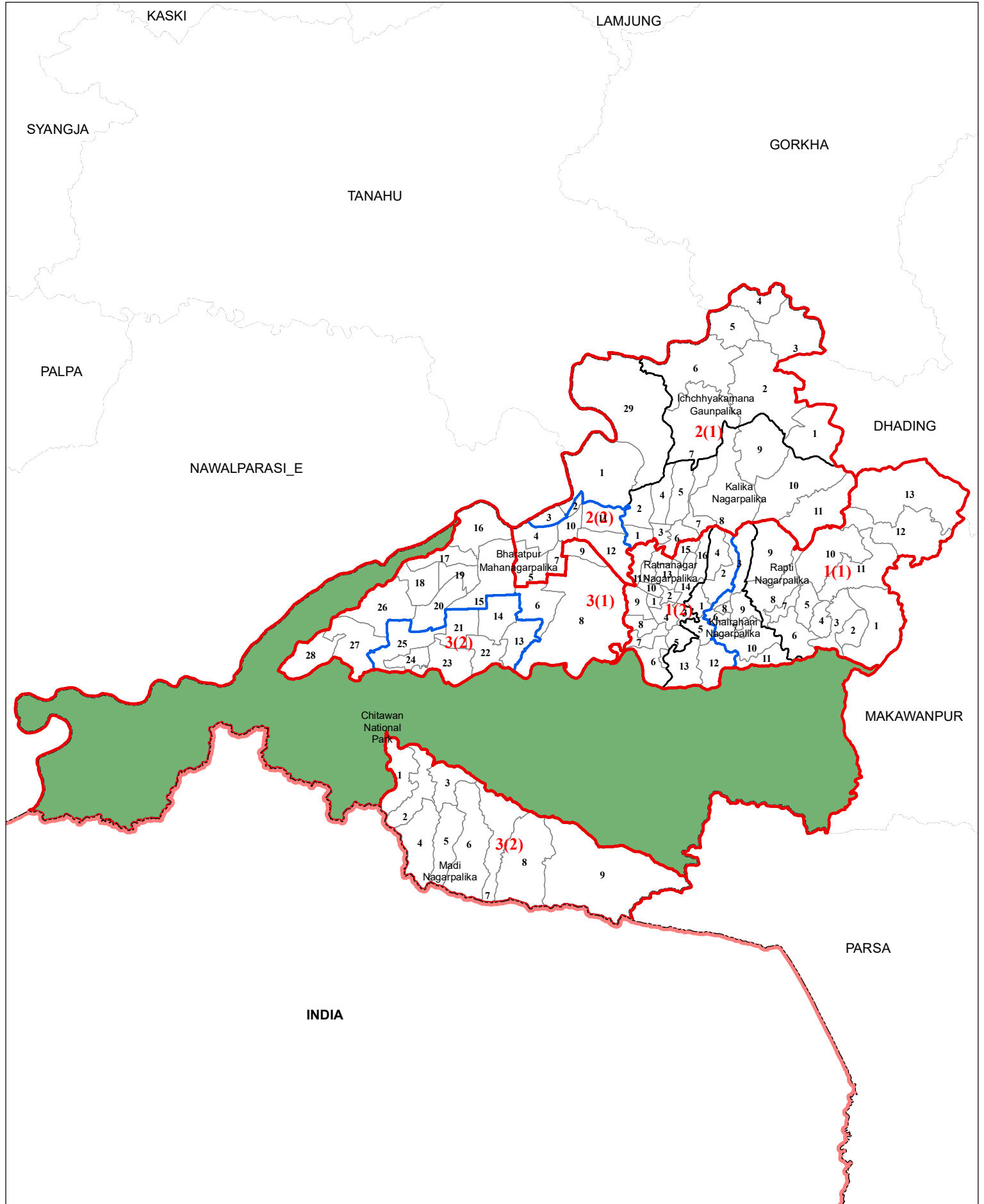
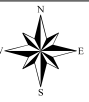


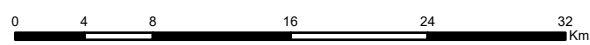
# CHITAWAN

No. of House of Representative Constituency: 3

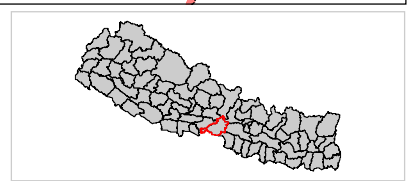
No. of Provincial Constituency: 6



- Legend**
- International Boundary
  - Province Boundary
  - District Boundary
  - House of Representative Boundary
  - Provincial Constituency Boundary
  - Palika Boundary
  - Ward Boundary
  - Sanskritik Area
  - National Park/Wildlife Reserve/Hunting Area/Watershed Area



**Note:**  
**1** in **1(1)** indicates House of Representative Constituency Number and **(1)** indicates Province Constituency Number within the House of Representative Constituency Number and likewise.



Spatial Data Source : Survey Department  
 Population Data Source : Population Census 2011, CBS  
 Government of Nepal

Prepared By : Electoral Constituency Delineation Commission (ECDC), 2074